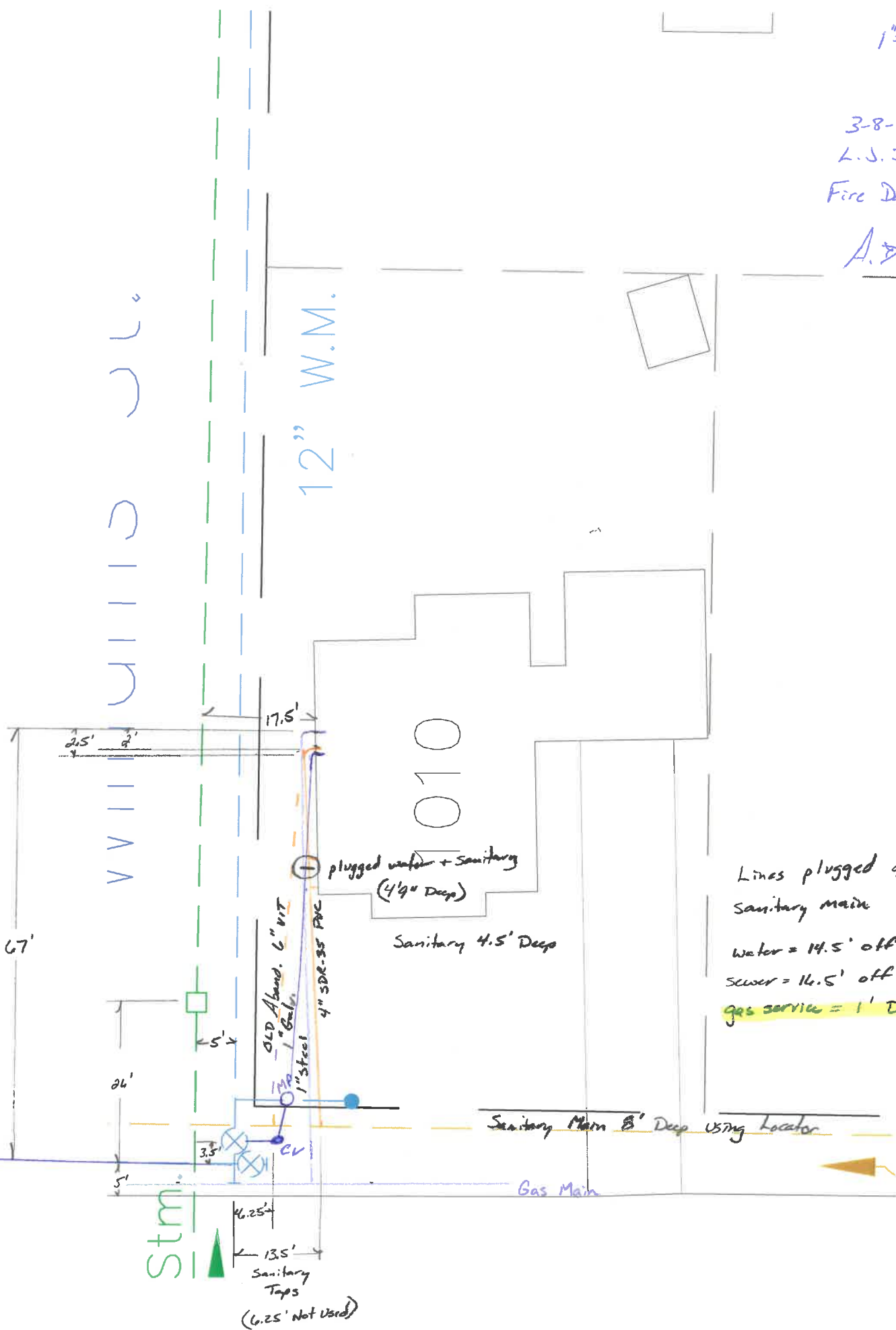


1"=20'

3-8-18  
L.J. Irving  
Fire Damage Demo

A. Debb



Lines plugged 40'4" from  
Sanitary main  
 Water = 14.5' off storm main  
 Sewer = 16.5' off storm main  
 Gas service = 1' Deep by house

Stm  
▲

Sanitary Taps  
(6.25' Not Used)

S. Perry + Williams Streets

1010 S. PERRY ST.  
HOUSE THAT BURNED

Pipe Graphic Report of PLR S 120 X for Napoleon

<b>Setup</b> 30	<b>Surveyor</b> Roger Darr	<b>Certificate #</b> U-906	<b>System Owner</b>	
<b>Drainage</b>	<b>Survey Customer</b> RD Zande			
<b>P/O #</b> Southside I&I 07	<b>Date</b> 2007/06/19	<b>Time</b> 13:58:00	<b>Street</b> S Perry St	
<b>Locality</b> Napoleon	<b>Further location details</b>			
<b>Start</b> S 120	<b>Rim to invert</b>	<b>Grade to invert</b>	<b>Rim to grade</b>	<b>Ft</b>
<b>Finish</b> S 119	<b>Rim to invert</b>	<b>Grade to invert</b>	<b>Rim to grade</b>	<b>Ft</b>
<b>Use</b> Sanitary	<b>Direction</b> Downstream	<b>Flow control</b> Not Controlled	<b>Tape/Media #</b> 1	
<b>Shape</b> Circular	<b>Height</b> 8	<b>Width</b> ins	<b>Preclean</b> J	<b>Year Cleaned</b> 6/19/2007
<b>Material</b> Concrete Pipe (non-reinforced)	<b>Joint length</b>	<b>Ft</b>	<b>Total length</b> 382.2	<b>Ft</b> <b>Length Surveyed</b> 382.20
<b>Lining</b>	<b>Year laid</b>	<b>Year rehabilitated</b>	<b>Weather</b>	Dry
<b>Purpose</b> Infiltration/Inflow Investigation	<b>Cat</b>	Not known		
<b>Additional info</b>				
<b>Location</b> Main Highway - Suburban/Rural				

